

To DIN 3537 and DIN 3230 part 5
 One end flanged to ISO 7005-2 (EN 1092-2: 1997, DIN 2501)
 One end for fusion welded installation in PE-gas pipes at max. working pressure 4 bar, SDR 11
 Stem sealing exchangeable under pressure

Use:

For gas to min. -20°C
 PE-pipe material to max. 20°C

Tests:

Valve Hydraulic test to DIN 3230 part 4:

Body: 0.5 bar air (PG3)
 1.5 x PN water (PG3)
 1.1 x PN air (PG3)

Seat: 0.5 bar air (PG3)
 1.1 x PN air (PG3)

Air test to DIN 3230 part 5: 1.1 x PN
 Operating torque test
 Pipe joints air test to: 1.5 x PN-pipes

Optional extras:

Handwheel
 Extension spindle
 Stem cap

Approvals:

DVGW

Materials:

Body and bonnet Ductile iron, GGG-50, to DIN 1693 (BS 2789 grade 500 - 7)
 Coating Electrostatically applied epoxy resin to DIN 30677 - Internally and externally
 Stem Stainless steel, DIN X 20 Cr 13
 Stem sealing NBR wiper ring, 4 NBR O-rings, NBR rubber manchette
 Stem seal nut Dezincification resistant brass, CZ 132 to BS 2872
 Wedge Ductile iron, GGG-50, core fully encapsulated with NBR rubber with integral wedge nut of dezincification resistant brass, CZ 132 to BS 2874
 Thrust collar Dezincification resistant brass, CZ 132 to BS 2872
 Bonnet bolts Stainless steel A2, sealed with hot melt
 Bonnet gasket NBR rubber
 Sleeve St 52 to DIN 2448/1629
 Shrink hose Plastic to DIN 30672
 Pipe PE 80/PN 4 yellow - DVGW



To DIN 3537 and DIN 3230 part 5
One end flanged to ISO 7005-2 (EN 1092-2: 1997, DIN 2501)
One end for fusion welded installation in PE-gas pipes at max. working pressure 4 bar, SDR 11
Stem sealing exchangeable under pressure

Component list

1. Stem

2. NBR wiper ring

3. Stem seal nut

4. NBR O-ring

5. Bonnet

6. Thrust collar

7. NBR rubber manchette

8. Bonnet bolt
9. Bonnet gasket

10. Wedge nut

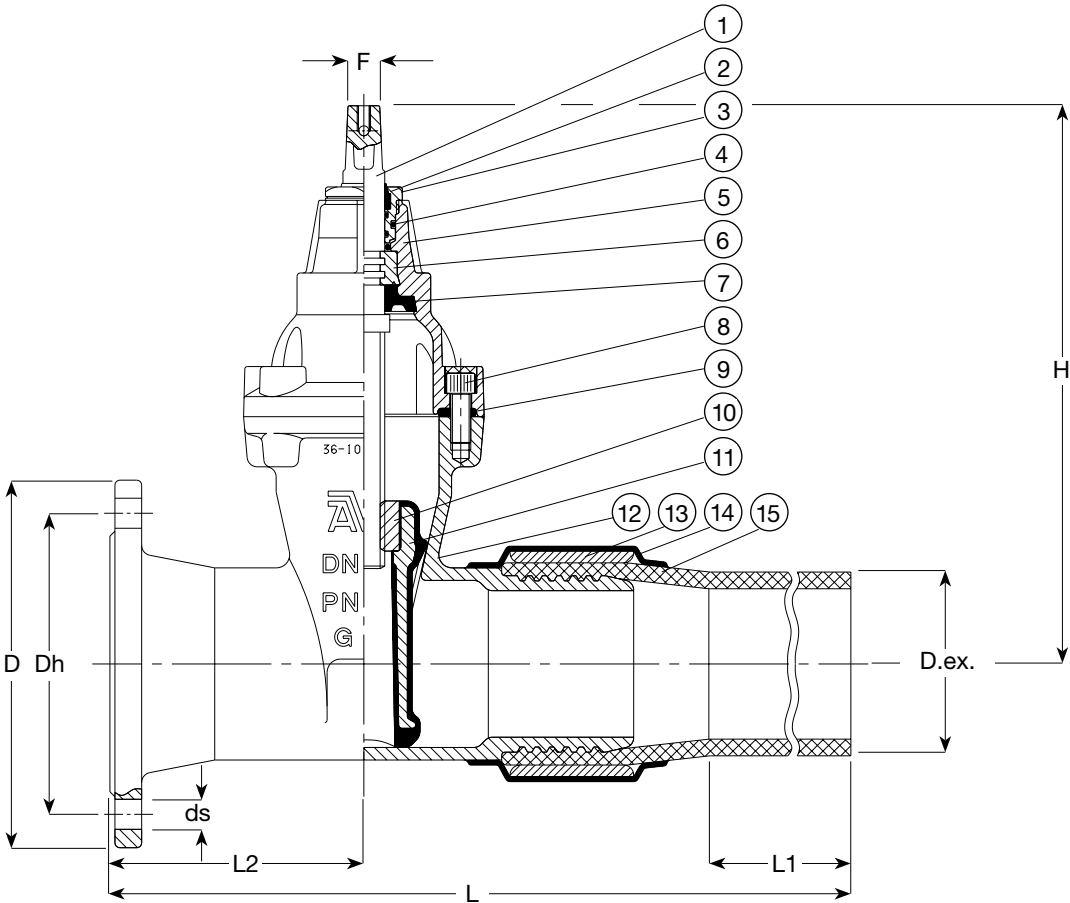
11. Wedge

12. Body

13. Sleeve

14. Shrink hose

15. Pipe



Ref. nos.	DN	PE-pipe D.ex. mm	L mm	L1 mm	L2 mm	H mm	D mm	Dh mm	ds mm	Holes	F mm	Weight kilos
38-063-90603037	50	63	565	125	300	241	165	125	18	4	14	11
38-090-90603037	80	90	621	140	255	297	200	160	18	8	17	21
38-110-90603037	100	110	608	150	250	334	220	180	18	8	19	27
38-125-90603037	125	125	640	166	250	376	250	210	18	8	19	36
38-160-90603037	150	160	728	175	325	448	285	240	23	8	19	53
38-180-90603037	150	180	725	175	265	448	285	240	23	8	19	56
38-225-90603037	200	225	754	200	265	562	340	295	23	8	24	92